



Thunder Power Tarp Kit Installation

Rear Flex Arm – Curb Side Stowing

104119-XX



Rear Pivot Installation

1. On the rear of the trailer measure from the bottom of the tarp cap, straight down 27" and put a dry erase mark on the rear face of the trailer extending from center towards roadside approx. 2". See *figure 1*.
2. For slant nose trailers measure approximately 29 1/2" from the bottom of the tarp cap. See *figure 2*.
3. Mark and drill inner bracket in four places. This kit is designed to be used on different styles of trailers requiring the holes to be drilled as needed.
4. Vertically center the inner bracket with the line marked in step 1.
5. Find the four fasteners that line up to four of the holes in the bracket. See *figure 3*. If no holes in the bracket line up with the fasteners in the nose of the trailer the pivot point can be moved up to 2" to roadside or up to 1" to curbside along the horizontal dimensions shown. The bracket can be moved up to 1" higher or lower on the vertical axis.
6. Once the holes in the bracket are lined up with four fasteners, mark these four fasteners and set the bracket aside for now.
7. Using a 1/4" drill bit, remove the fasteners that were marked in the previous step. Only remove the 4 fasteners directly behind the four holes in the bracket.
8. Drill four 25/64" (.390") holes where the four fasteners were removed.
9. Align the holes in bracket with holes on rear of trailer and fasten in place using four 3/8" button head bolts, washers, lock nuts and plastic washers provided. The plastic washers are placed between the inner bracket and the exterior trailer face.
10. Fasten the outer bracket to the inner bracket using four 1/2" hex head bolts, washers and lock nuts provided. Tighten the fasteners until they are snug but not tight. The fasteners will be tightened during step 13. See *figure 8* on the last page.

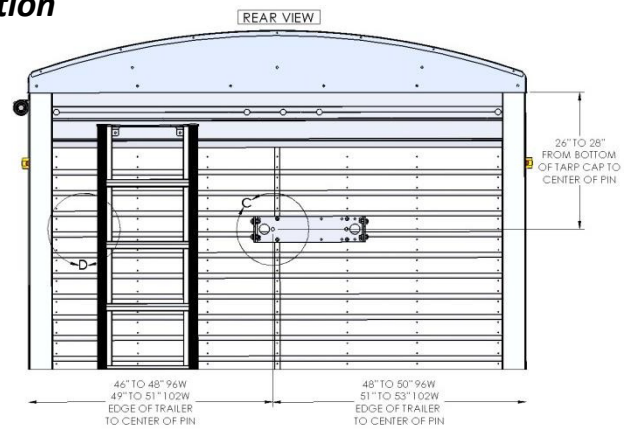


Figure 1. Rear end of trailer with dimensions.

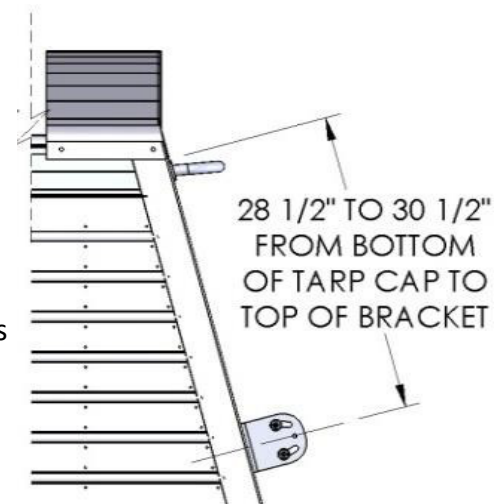


Figure 2. Bracket location for slant nose trailers

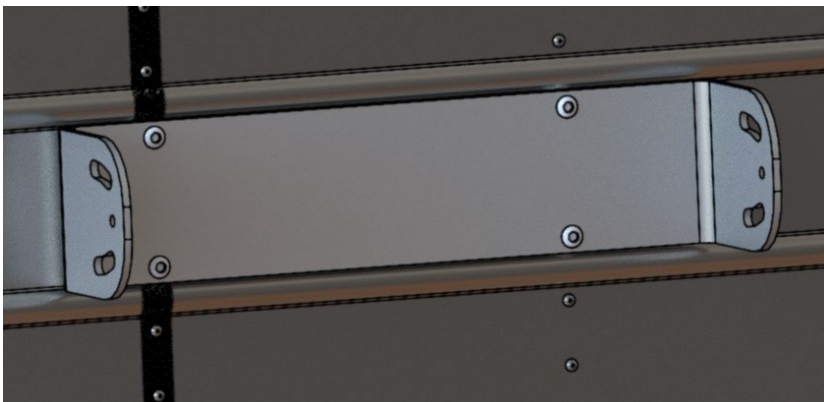


Figure 3. Inner bracket with fasteners installed.

Rear Flex Arm Installation

11. The spring pin is installed in the middle position of the 3-hole pattern of the pivot assembly. This will set the spring tension to medium. See *figure 4*.
12. Loosen the three set screws holding the cable into the arm. Pull out 24" (2 feet) of cable and snug the set screws to hold it in place.
13. Rotate the arm up until the coupler assembly can slip onto the roll tube spline. Insert the retaining pin to hold the coupler in place. See *figures 5 and 6*.

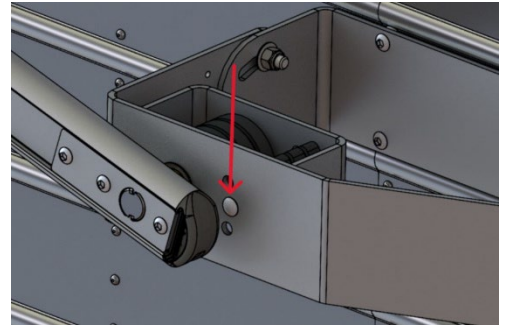


Figure 4. Spring pin location



Figure 5. Roll tube spline, coupler and retaining pin shown

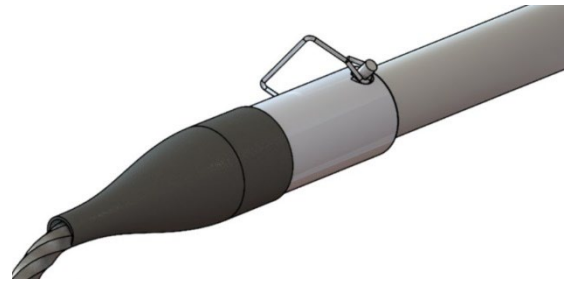


Figure 6. Assembly complete

14. Tighten the fasteners and set screws to hold the outer bracket and the cable in place.
15. After all the fasteners are tightened, lock the outer bracket in place by using the pre-drilled $25/64$ " (.390") holes in the inner bracket as a guide to drill a $25/64$ " (.390") hole through each side of the outer bracket. Use two $3/8$ " bolts and lock nuts to secure the bracket and prevent it from shifting. See *figure 7*.

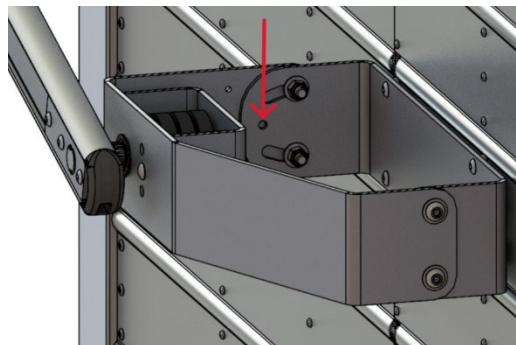


Figure 7. Hole location for final $3/8$ " bolts and nuts.

